

Albany Fraser Province Gold Discovery by Beadell Resources

- **High grade gold discovery adjacent to Neale Project demonstrates prospectivity along strike from Tropicana**

Triton Gold Limited (“Triton”, ASX: TON) is buoyed by the discovery of high grade gold at the Hercules Prospect by Beadell Resources, as announced to the ASX on 1st December 2010. Hercules is located 14km west of Triton’s Neale Project and both prospects are strategically located just 65 kilometres north east of the Tropicana deposits (Figures 1 and 2). Beadell reported 30 metres at 8.3g/t Au in composite samples from an air core drill hole along a 10km structure named the Hercules Shear Zone. The full ASX report may be accessed at

www.beadellresources.com.au/upload/pages/company-announcements/new-discovery-in-tropicana-belt-30m--8-3-gpt-gold.pdf

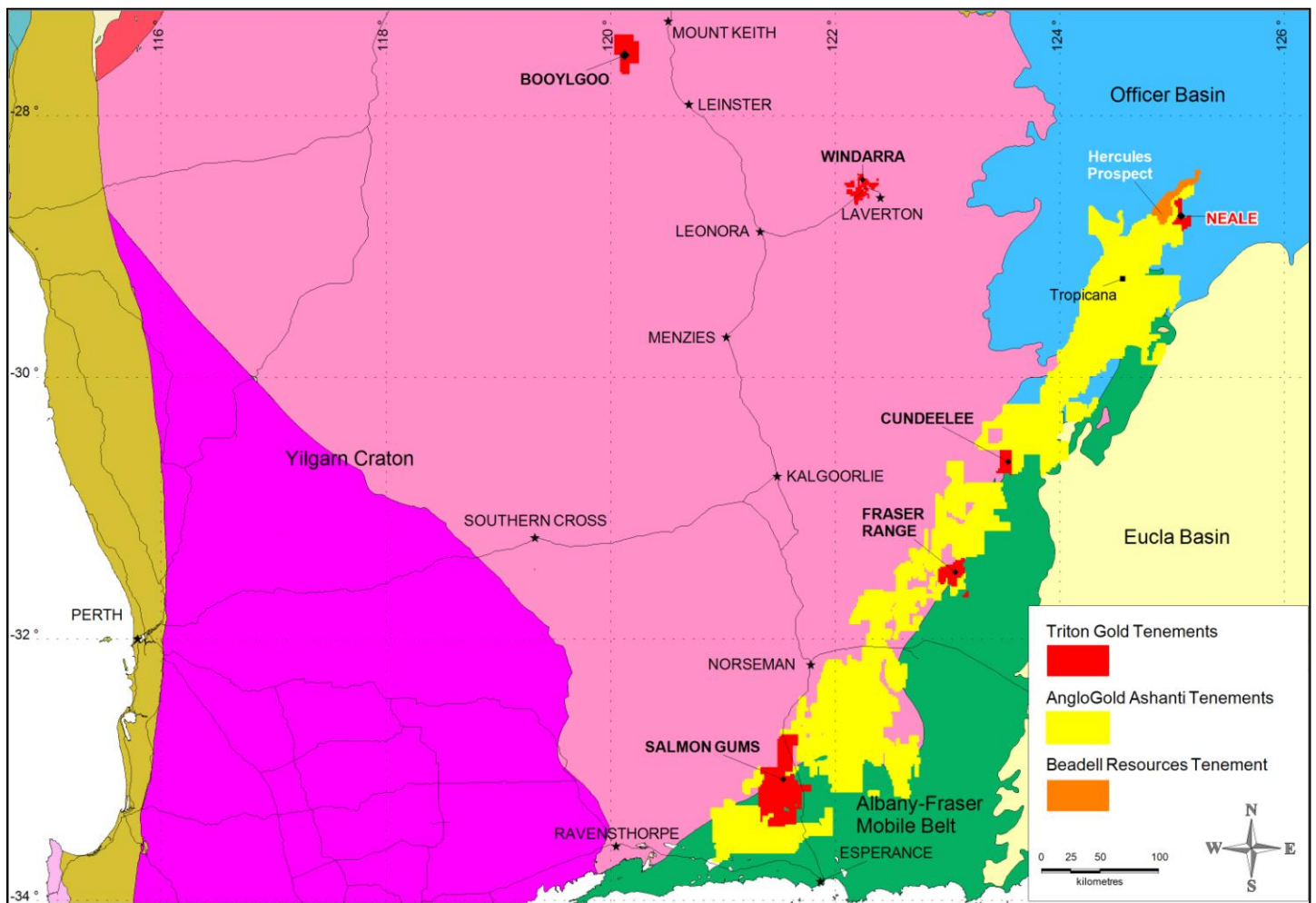
Triton’s Neale Project has the potential for north-east striking shear zones parallel to the interpreted mineralised zones at Hercules and Tropicana. Previous surface soil sampling by Iluka Resources at Neale showed anomalous gold in open file data. The project is still under application for an exploration licence (E69/2764).

The recent announcement of the go ahead for the \$690M development of the +5Moz Tropicana Gold Project by AngloGold Ashanti / Independence Group adds considerable impetus to Triton’s priority objective to discover similar mineralisation in the Salmon Gums, Fraser Range North, Cundeelee and Neale gold projects that are all located within the otherwise AngloGold dominated Albany Fraser Province (Figure 1).

For further information, please contact:

Lance Govey
Managing Director
Tel: +61 89215 4222
Email: lgovey@tritongold.com.au

Brad Boyle
Company Secretary
Tel: +61 89215 4222
Email: brad.boyle@balancelegal.com.au



**Figure 1. Location of Neale Project and Beadell's Hercules discovery – Albany Fraser Province, WA
(see detail in Figure 2. below)**

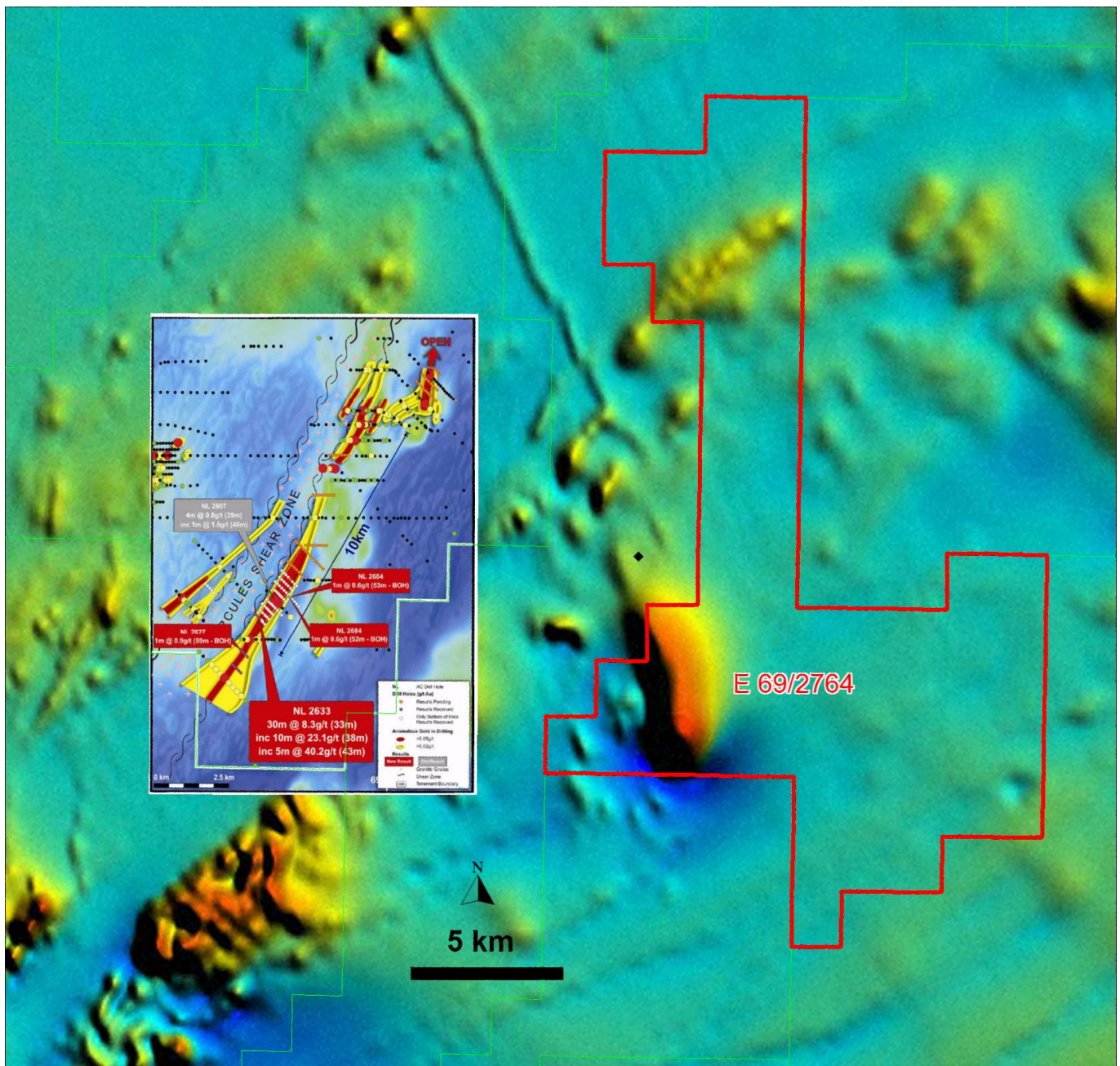


Figure 2. Neale Project (E69/2764) and location of Hercules prospect on GSWA aeromagnetics